



Before starting installation, review this document to ensure that all parts and hardware are included in the package.

In the event that parts are missing, please contact MASTERACK at 1-800-222-8785 to re-order missing parts.

Slide Down Ladder Rack System Low Roof Full Size Ford Transit Installation



MASTERACK.COM

MASTERACK Headquarters
2400 Mellon Court
Decatur, GA 30035
800-222-8785

■ Slide Down Ladder Rack System

Reference: 02J024 & 02J025
(low roof full size Ford Transit)

****FOR SINGLE SLIDE DOWN LADDER RACK,
TO INSTALL A DOUBLE SLIDE DOWN,
REPEAT STEP ON STREET SIDE. ****

Important: Please read before proceeding.

Failure to assemble and install the ladder rack system per the instructions and/or the mounting of ladders in excess of the recommended lengths and/or operating system other than in the recommend manner will void all expressed or implied warranties.

Maximum Ladder lengths on Ladder Racks

Roof bow spacing, front to rear is 71 – 1/2” and is fixed due to adapter plate spacing. Ladder Length: 32’ Extension Ladder

■ Recommended Tools

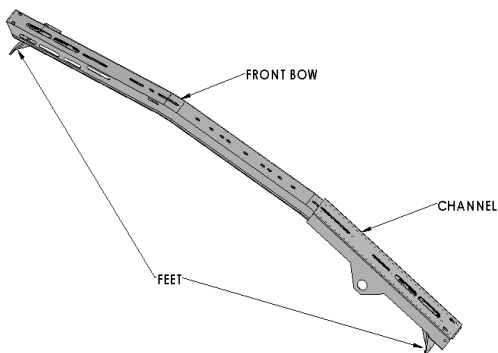
- Wrenches: 1/2” and 9/16”
- 3/8” Ratchet
- Sockets: 1/2” and 9/16”
- Grease Pencil
- 3/8” x 6’ Extension
- Stepladder
- 8 Foot Measuring Tape
- Protective Cloth or Cardboard
- Torque Wrench
- 13mm Socket

Parts List

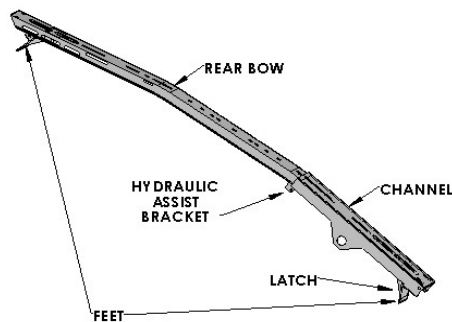
Item	Qty	Description
1	1	5/16 External Tooth Washer
2	12	5/16 Flat Washer1
3	1	5/16-18 Hex Nut
4	8	5/16-18 x 1.50 HH cap Screw
5	14	5/16-18 Lock Nut
6	12	3/8"-16 Lock Nut
7	8	3/8-16 x 1.00 Carriage Bolt
8	6	5/16-18 x 1.75 HH Cap Screw
9	4	Nylon Grommets
10	1	Front Tube
11	1	Splice Tube
12	1	Security Hold Down
13	4	Wheel
14	2	Axle
15	1	Front Bow Assembly
16	1	Rear Bow Assembly
17	1	Rear Tube / Handle Assembly
18	2	Stop Pad Assembly
19	2	Channel Support Assembly

Contents of 02H851		
Item	Qty	Description
20	4	Adapter Plate Transit LR
21	4	Carriage Bolt 3/8-16 x 3"
22	4	Washer 3/8" Split Lock
23	4	Washer Flat 3/8"
24	4	Washer Flat 5/16"
25	4	Washer Split Lock 5/16"
26		Bolt Hex Washer Head 8mm x 35mm

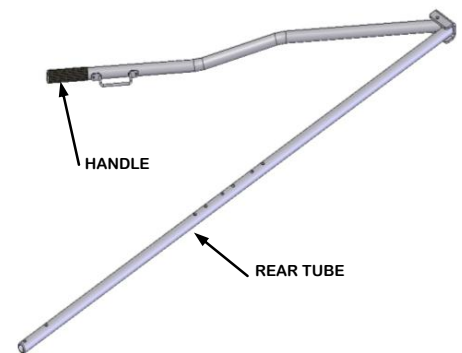
Front Bow Assembly



Rear Bow Assembly

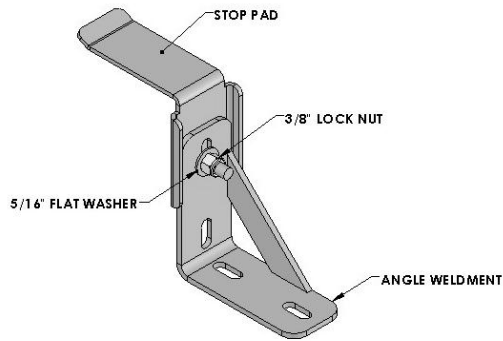


Rear Tube / Handle Assembly

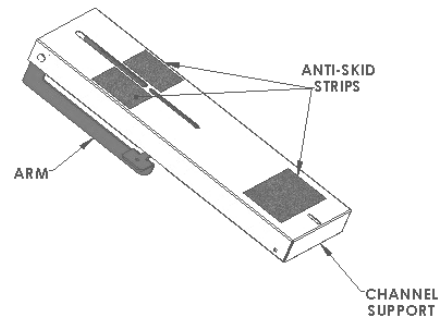


Parts List

Stop Pad Assembly (Qty 2)



Channel Support Assembly (Qty 2)



Installation Procedure

Unpack the pre-assembled slide down from box and lay out the assemblies and other parts on a flat surface.

Assemble Stop Pads (Found in Parts Box), using 5/16" Flat Washer and 3/8" lock Nut (Found in O2A074 Hardware Bag).

FOR REAR STOP BRACKET w/HYDRAULIC ASSIST (If Hydraulic Assist is NOT included, repeat step 5-6 for Front Stop Bracket Install)

On rear crossbow assembly, remove carriage bolt 3/8"-16 x 3/4" from rear of hydraulic assist to hydraulic bracket. Pull hydraulic assist out of the way. (See Figure 1A)

Remove top carriage bolt 3/8"-16x1" from bottom of the channel assembly (Item 17, Figure 2). Replace same bolt loosely, while including Stop Bracket on top and turn to the side for access to lower bolt.

1. Align top of the Stop Bracket with the Channel Assembly(See Figure 2). Before completely tightening, be sure crossbow and Channel Assembly are aligned at large hole openings. Tighten top bolt and bottom bolt of the Stop Bracket. Reattach Hydraulic Unit to bracket.

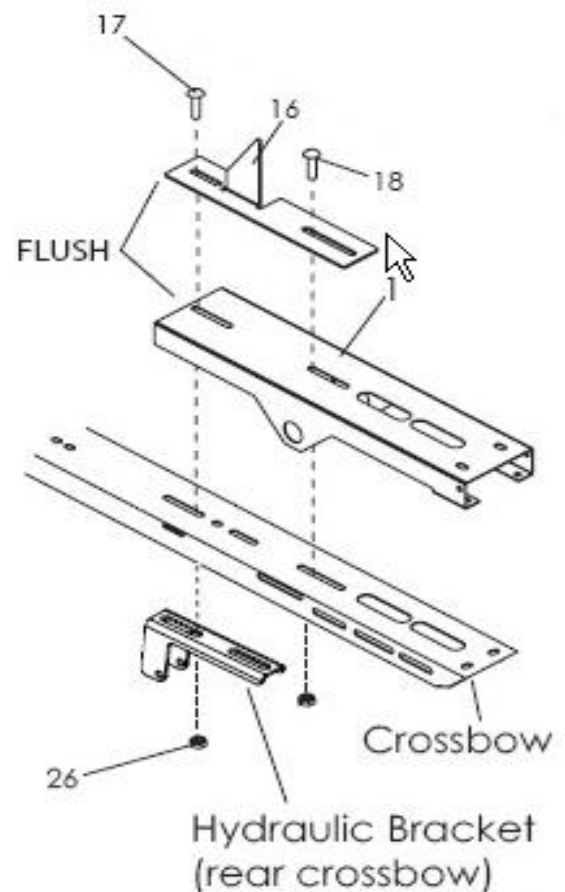


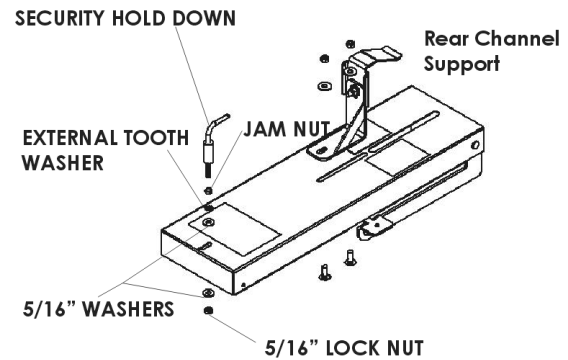
Figure 2

■ Installation Procedure

2. Channel Support Assembly Located in the Parts Box, find Security Hold Down, two 5/16" Washers, 5/16" Lock Nut, 5/16" External Tooth Washer and a 5/16" Jam Nut (Only one in the 02A074 Hardware Bag). Place the Security Hold Down in the small slot in the rear channel with the bent rod facing inboard. To adjust height - move the Jam Nut up and down. After adjustments (See dimensions in Figure 3). Torque fasteners to 20 Nm. Cut wire that is holding pivot cam of the hydraulic assist. Locate two Stop Pad Assemblies, two 3/8-16x 1.00" Carriage Bolts, two 5/16" Washers and two 3/8-16" Lock Nuts. Install the Stop Pad Assemblies on the Channel Supports and torque the fasteners to 24 Nm (See Figure 3). The distance between the Stop Pads and the Stop Brackets will be determined by the width of your particular ladder rails. **NOTE: See drawing for location of Stop Pad.**

3. Locate two Axles and four Wheels in the 02A074 Hardware Bag and insert the Axles through the holes in the end of the Channel on the Rear Bow and fit the Wheels onto both ends. Repeat for the Channel on the Front Bow (See Figure 4).

4. Locate two Nylon Grommets and insert them into the large holes in the Channel. Slide assembled Channel Support over Wheels on Rear bow and rest with Stop bracket through slot. Align small tab on arm inside grommets in Channel. (See Figure 5)



Stop Pad Assembly Location

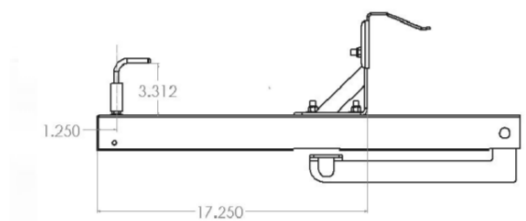


Figure 3

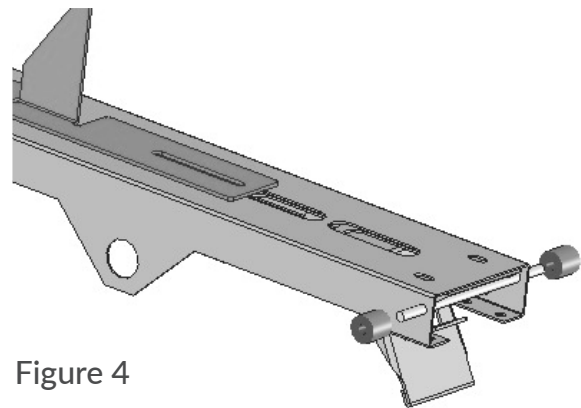


Figure 4

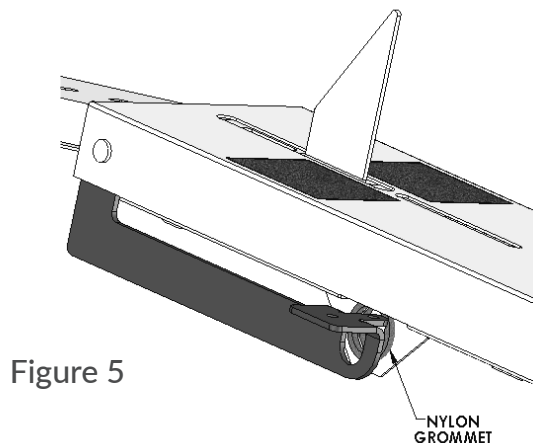


Figure 5

Installation Procedure

5. Extend the rod of the Hydraulic Assist, which has the Pivot Cam attached, to a position where it is aligned with the holes of the Channel.

6. Slide Rear Tube / Handle Assembly through left arm, Grommet, Pivot Cam, Grommet and right hand arm. Make sure the rubber bumper in the rear clevis is facing toward the passenger side in the holes as shown, use four 5/16-18 x 1.50" Hex Head Screws and four 5/16-18 Lock Nuts to attach the arms to the Rear Tube. Rotate the Channel Assembly down to gain access to the two interior holes (See Figure 6). Torque the fasteners to 20 Nm.

7. Align the holes in the Pivot Cam and in the Rear Tube Assembly and insert two 5/16-18x 1/75" Hex Head Screws and two 5/16-18 Lock Nuts. Torque the fasteners to 20 Nm. (See Figures 6 and 6A)

8. Locate Front Tube, two Nylon Grommets, four 5/16-18x 1.50" Hex Head Screws and four 5/16-18 Lock Nuts. Attach Front Tube to arms through holes shown by torquing the fasteners to 20 Nm (See Figure 7). Repeat the procedure from the Rear Tube Assembly and Rear Bow Assembly.

9. Locate Splice Tube, four 5/16-18 x 1.75" Hex Head Screws and four 5/16-18 lock Nuts and attach the front and rear tubes. Use the holes shown (See Figure 8). Torque the fasteners to 20 Nm.

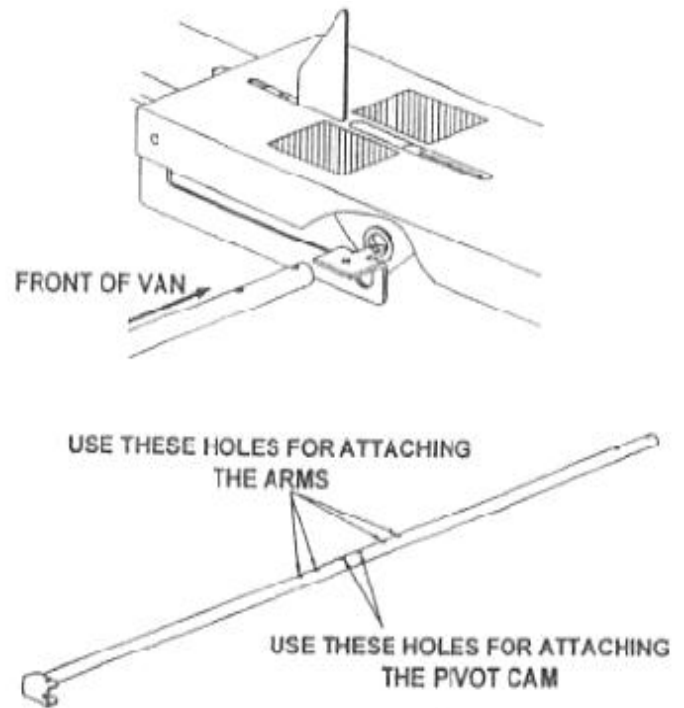


Figure 6

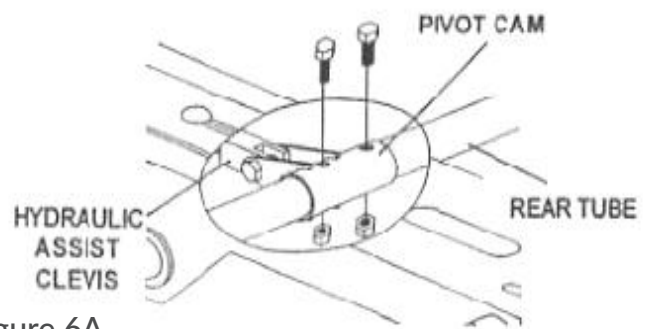


Figure 6A

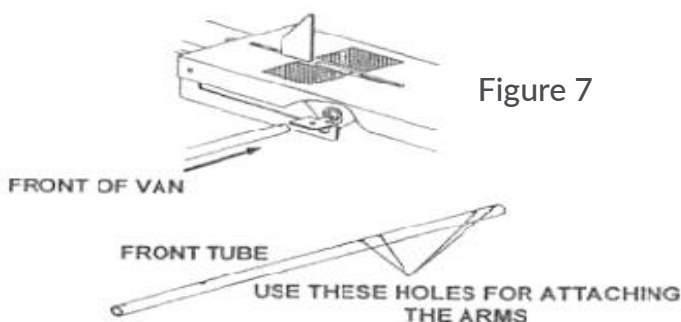


Figure 7

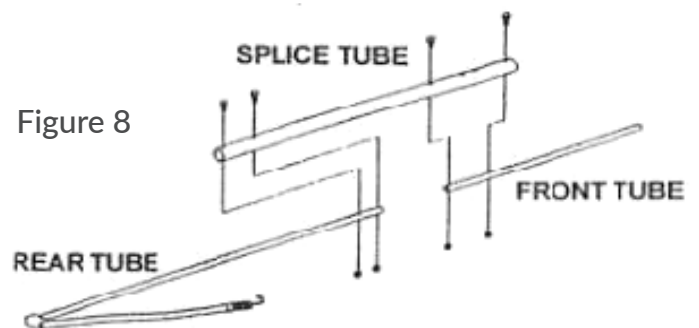


Figure 8

■ **Installation Procedure**

10. Adapter Plate Installation for low roof full size Ford Transit - 02H851 - (4) adapter plates and hardware bag (02H876)

11. Install the four adapter plates into the four recesses on the top of the vehicle, (approximate distance 6' center to center).

IMPORTANT: Pre-Install the 3" long carriage bolts before putting adapter plates onto vehicle.

12. Use the metric (M8x35mm) hex washer head bolts, 3/8" lock washers and 3/8" washers as shown below.

The use of Loctite Threadlocker #242, (or equivalent), is required for the 8mm fasteners

TORQUE SPECIFICATION: M8 bolts = 20 Nm

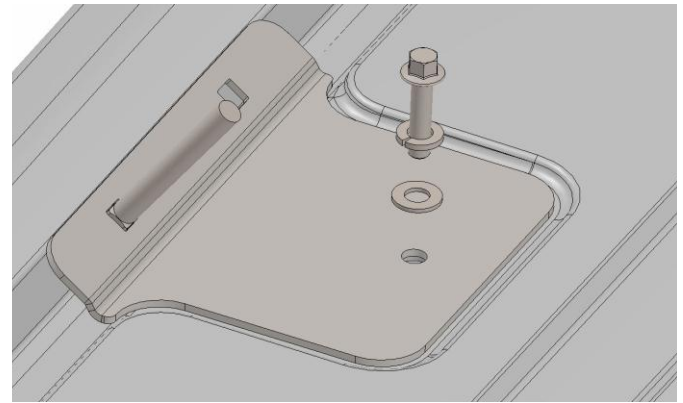


Figure 9 Typical REAR adapter plate installation
Note that carriage bolt is toward REAR of vehicle.

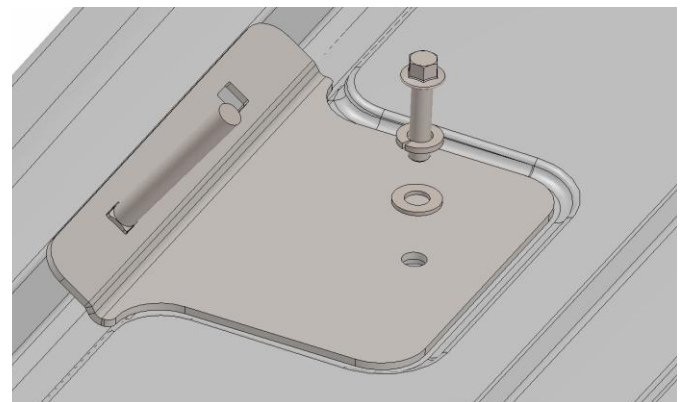
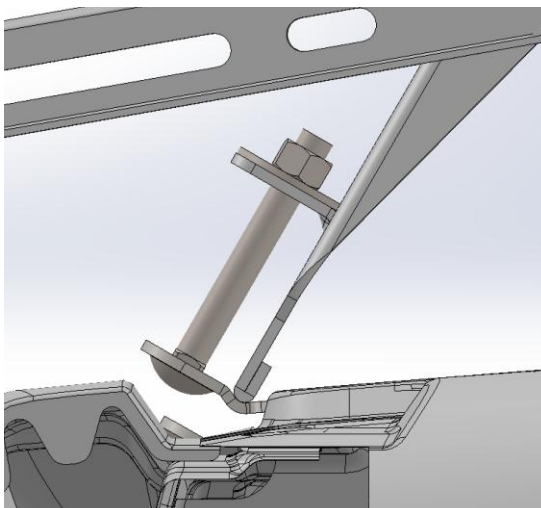


Figure 10 Typical FRONT adapter plate installation. Note that carriage bolt is toward FRONT of vehicle.



Typical ladder rack foot to adapter plate interface. Tighten nut only to a point where tab on foot begins to bend. Over-tightening can cause damage to the foot, adapter plates and hardware; creating an unsafe condition.

■ Slide Down Ladder Rack Adjustment

The adjustment should be accomplished with the actual ladder you will be carrying or an identical model. The adjustment procedure should be repeated when a different ladder is used.

1. Move the slide down ladder channels so they are resting over vehicle side.
2. Move the angle stops to the maximum outboard position.
3. Load ladder on the channels by resting it on the front and rear angle stops. Your ladder should not exceed vehicle bumper lines.
4. Move ladder to the top of your vehicle by rotating the handle down and then upward.
5. Engage handle into latch.
6. Adjust and tighten pad assembly stop/vinyl. Clearance between top of ladder side and pad should be 1/4" on the rear and 1/2" on the front.
7. Slide ladder to contact channel blades.
8. Slide and tighten front and rear angle stops to the ladder side rails.

NOTE: Final adjustment for the security hold down should leave approximately a 1/16" – 1/18" gap on the side of the ladder and a 1/4" – 3/8" gap on the top.

MASTERACK® 3 Year / 36,000 Mile Limited Warranty

MASTERACK® commercial van and pickup equipment is warranted to be from defects in material and workmanship, under normal use and service for a period of one (1) year from date of purchase. Factory installations, and products installed in new vehicles by an authorized MASTERACK® installer are warranted for (3) years or 36,000 miles (60,000KM), whichever comes first. **This warranty covers only repairs, or at MASTERACKS' discretion, replacement to correct any defects related to materials and workmanship.**

This warranty does not apply to:

- Additions, alterations, or installations made by persons including dealers, other than MASTERACK® and its authorized distributors, made in accordance with MASTERACK® specifications and / or instructions, nor to defects arising out of attribute to such additions, alterations or installations.
- Defects attributable to abuse or misuse of the product, misapplication, negligent accident, modification or tampering.
- Damage resulting from failure to promptly notify and comply with the instructions of the dealer or manufacturer about defects when noted.
- Any incidental or consequential damages connected with a defect, either while under warranty or afterward, including the cost of a rental truck and / or loss or revenue.

THE WARRANTY IS THE ONLY WARRANTY APPLICABLE TO A MASTERACK PRODUCT PURCHASE. ALL OTHER WARRANTIES, EXPRESSED OR IMPLIED, INCLUDING BUT NOT LIMITED TO, THE IMPLIED WARRANTIES OR MERCHANTABILITY AND FITNESS FOR A PARTICULAR PURPOSE ARE DISCLAIMED. MASTERACK® AND ITS SUBSIDIARIES, SHALL NOT BE LIABLE FOR ANY INCIDENTAL OR CONSEQUENTIAL DAMAGES ARISING OUT OF ANY BREACH OF THIS WARRANTY, NOR SHALL THE DAMAGES EXCEED THE RETURN AMOUNT OF THE PURCHASE PRICE PAID BY THE ORIGINAL PURCHASER.

Warranty claims must be submitted to either your sales representative or a customer service representative at **816-455-0218**. The vehicle must be delivered to the original MASTERACK® authorized dealer for inspection and any warranty service. Any warranty service to be performed by a source other than MASTERACK® location or an approved MASTERACK® distributor must be authorized in advance of the repairs by the MASTERACK® Warranty Administrator and a purchase order issued by MASTERACK® in advance or repairs for the authorized repairs.